



The Benefits Of Safety Grating Over Similar Options

Safety Across Public and Industrial Settings

Plant and facility managers are responsible for overseeing daily processes and maintaining high levels of productivity. There are many critical factors to consider when optimizing the efficiency of a facility, the most important of which is employee safety.

Safety is the most important consideration for employers. Slips and falls are far and away the leading cause of accidents in industrial workplaces. Employees are put at risk every day by hazards such as slippery or wet scaffolding, ladders, steps and platforms.

According to the Federal Occupational Safety and Health Administration (OSHA), falls were among the top 10 incidents cited in **fiscal year 2013**; falls were also the cause of the highest number of construction site fatalities in 2012, accounting for 34.6% of total incidents. In an effort to reduce these incidents, OSHA enforces standards on all working and walking surfaces in the United States; Grating, walkways, steps and platforms must be kept free of scrap and debris.

As a safety measure, Safety Grating is widely used in industrial as well as public settings, providing security by improving traction in all environments and conditions. These products help prevent injuries, safeguard company personnel, and minimize worker compensation expenses.

The general public also benefits from Safety Grating, using them every day in a variety of areas including ramps, walkways, and steps in sports stadiums.

Considerations for Gratings

There are a number of factors to consider when choosing Safety Grating for any application, whether in the manufacturing, transportation, architectural, or energy industries. Since today's construction projects are held to impeccable standards, Safety Grating must be appropriate to the setting, and have the proper fit.

Environment is a chief consideration. The material used should be able to withstand the damaging effects of corrosion, and as such, it should be naturally corrosive-resistant, such as pre-galvanized steel. Other factors to take into account include coatings such as paint, hot dip galvanized, or other anti-corrosive materials.

For Grating in slippery environments, such as icy, wet, or oily conditions, it is imperative that Safety Grating has surfaces with anti-slip features, such as serrated edges or raised buttons, which increase traction when walking on these surfaces.

The weight of the Grating is another essential factor. Many Safety Grating applications require light weight material. As a result, selected material should be rigid, strong, and able to withstand foot traffic and any inclement weather elements while remaining lightweight and easy to install.

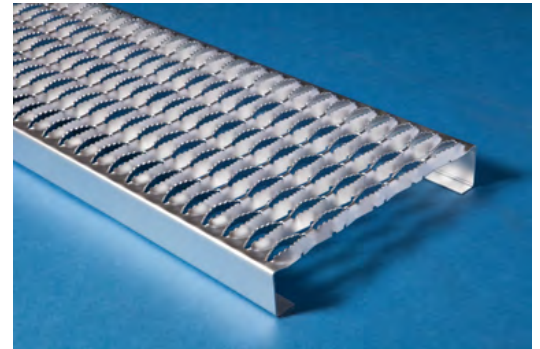


Versatility in Safety Grating

As you can see, not every type of Safety Grating or material is ideal for every situation. Certain types of grating are very strong and able to withstand heavy loads but are prohibitively heavy and expensive to manufacture. Certain others varieties are lightweight, durable, and inexpensive to fabricate, but do not fare well in environments with corrosive elements.

Three varieties of Safety Grating, however, are able to fulfill most strength, weight, shape, and corrosion requirements. These are the Open-Grip®, Deck Span®, and Tread Grip® Safety Grating produced by Metalex.

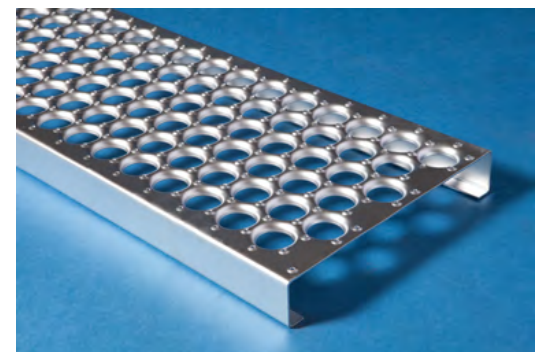
1. Deck Span® Safety Grating is commonly found in plants, facilities, and construction sites. This lightweight, single-piece construction grating offers self-framing features that help the product withstand the heaviest loads. Its diamond surface pattern, which is formed by cross-hatching formed and reticulated metal struts, adds to its use as a security measure. Also, this pattern is self-cleaning, allowing waste materials and light to pass through more easily.



Deck Span® is often used in environments that require maximum grip for added safety—this includes slip resistance in all directions, making it ideal for use inside facilities such as stair treads, catwalks, balconies, open flooring, platforms, and walkways.

Deck Span® grating is available in several sizes and shapes. Standard channels range in size from 4-3/4" (2 diamond) to 24" (10 diamond) x 10' or 12'. Additionally, the grating is available in hot rolled pickled & oiled (HRP & O) or pre-galvanized steel with 14 or 12 gauge thickness. Other materials include .080" and .100" 5052-H32 aluminum and 16-gauge stainless steel 304-2B.

2. Open-Grip® Safety Grating is widely used for rail and industrial applications. Open-Grip® features a round debossed hole design, to allow debris to fall through and keep the walking surface clear of scrap. These are used in settings that require safe, comfortable, and slip-resistant footing on open floors. They are created using a cold-working process which produces a Safety Grating with raised, perforated buttons and debossed holes that measure 1-3/8", allowing for increased flow of heat, air, and light. Raised buttons enhance the safety of these products, providing top quality slip resistance in all directions while retaining their grip even as they wear.

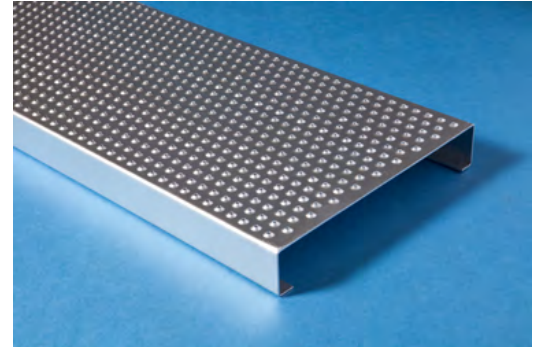


Open-Grip® Safety Grating is available in standard channels, walkways, and custom products. A number of options are available for the standard channels, including HRP & O and pre-galvanized steel in both 13 and 11 gauge thicknesses. 5052-H32 aluminum is also available in a thickness of .125". Open-Grip® standard channels are available in 5' or 24' lengths. Walkways are available in lengths including widths of 24", 30", and 36", and heights of 5". They come in materials that include HRP and G90, and 11 & 13 gauge

thicknesses. The integral toeboard in the open grip walkway is built in so a welded addition is not needed.

Custom Open-Grip® Safety Grating is available as well. Special features can be incorporated into the product, including interruptions to the grating pattern, end margins, leading edge holes, and wiped ends. The flexible design capabilities of Open-Grip® Grating are readily enhanced by processes such as TIG, MIG, and spot welding. Open-Grip® allows companies to achieve almost any specification, especially considering the wide variety of custom products and value-added services available.

3. Tread-Grip® Safety Grating is ideal as a cover for existing flooring and other indoor applications. This grating is created with a cold-forming process that consists of closely-spaced perforated surface buttons. Tread-Grip® is fitted with a circular pattern that is conducive for high-adhesive friction; additionally, this grating is designed with perforated buttons that greatly enhance the product's non-slip qualities.



Tread-Grip® is available in three ladder rungs, standard channels, stair treads, and sheets. Standard channels protect against falling objects (due to a low open area) and stair treads possess end caps (with slots and mounting holes) and margins on every side. Tread-Grip® grating is available in different gauges (depending on the product) with HRP & O or pre-galvanized steel options, as well as .125" 5052-H32 aluminum.

Tread-Grip® grating can be customized to meet the specific needs of your application. In addition to these options, other grating sizes and finishes are available via special order.

Make Employee Safety Your Priority / Employee Safety is Your Priority

Recent joint studies from the Bureau of Labor Statistics and the Center for Disease Control discovered that the manufacturing industry accounts for **16% of fall-related injuries** in the U.S., and 1 in 6 employees lost valuable work time resulting from these injuries. Moreover, slip and fall accidents claim the lives of nearly 20,000 workers each year. These alarming numbers can be decreased greatly by incorporating Safety Grating within diverse environments.

Metalex's **Safety Grating products** deliver the necessary traction in a variety of working conditions. Industrial and rail professionals have been relying on our Safety Grating for over a century. Our products are essential tools in any area with potential foot traffic areas; with the proper placement, installation, and usage Safety Grating cultivates safer a workplace in which slip and fall accidents are no longer a concern.

Learn more about our Safety Grating products by [contacting Metalex](#) today.

About Metalex

Metalex, powered by UPG, was founded in 1962 in Libertyville, IL by two local entrepreneurs. With diverse and complementary expertise in salesmanship and engineering, they grew their company with one machine in a small factory on the east edge of town. In 1979, Metalex moved into a facility on the site of a former horse farm in south Libertyville.

Metalex continued to grow and added to the original building in 1983, increasing total square footage to 150,000 and equipment totaling 23 expanding lines, a full machine shop and a secondary processing department that includes shearing, stamping and plasma cutting. In 2005, Metalex acquired Arcor, a manufacturer of perforated metal and a variety of metal tubes primarily for the fluid filtration industry.

In 2011, Metalex acquired Morton Manufacturing, the leading manufacturer of anti-slip walking surfaces for railcars, specifically for original equipment manufacturers (OEMs). The company also supplies distributors, OEMs and aftermarket customers in the agricultural, heavy equipment and general industrial space.

Morton has been providing customers with consistently superior products and excellent customer service since 1903 from the 200,000-square-foot facility, also located in Libertyville. Morton's Open Grip®, Deck Span® and Tread Grip® proprietary product designs provide non-slip surfaces that meet or exceed federal specifications for slip resistance.

In 2014, Metalex and Morton merged under the Metalex name. Two years later, in 2016, Metalex opened a facility in San Luis Potosi, Mexico. In 2019, Metalex was acquired by UPG Enterprises LLC, a strategic operator of metals and logistics companies across North America.



Learn more about all of Metalex's products and the processes we use to manufacture them.

[Visit our Resources Page](#)



Have any questions about our products and services?

[Contact Us Today!](#)