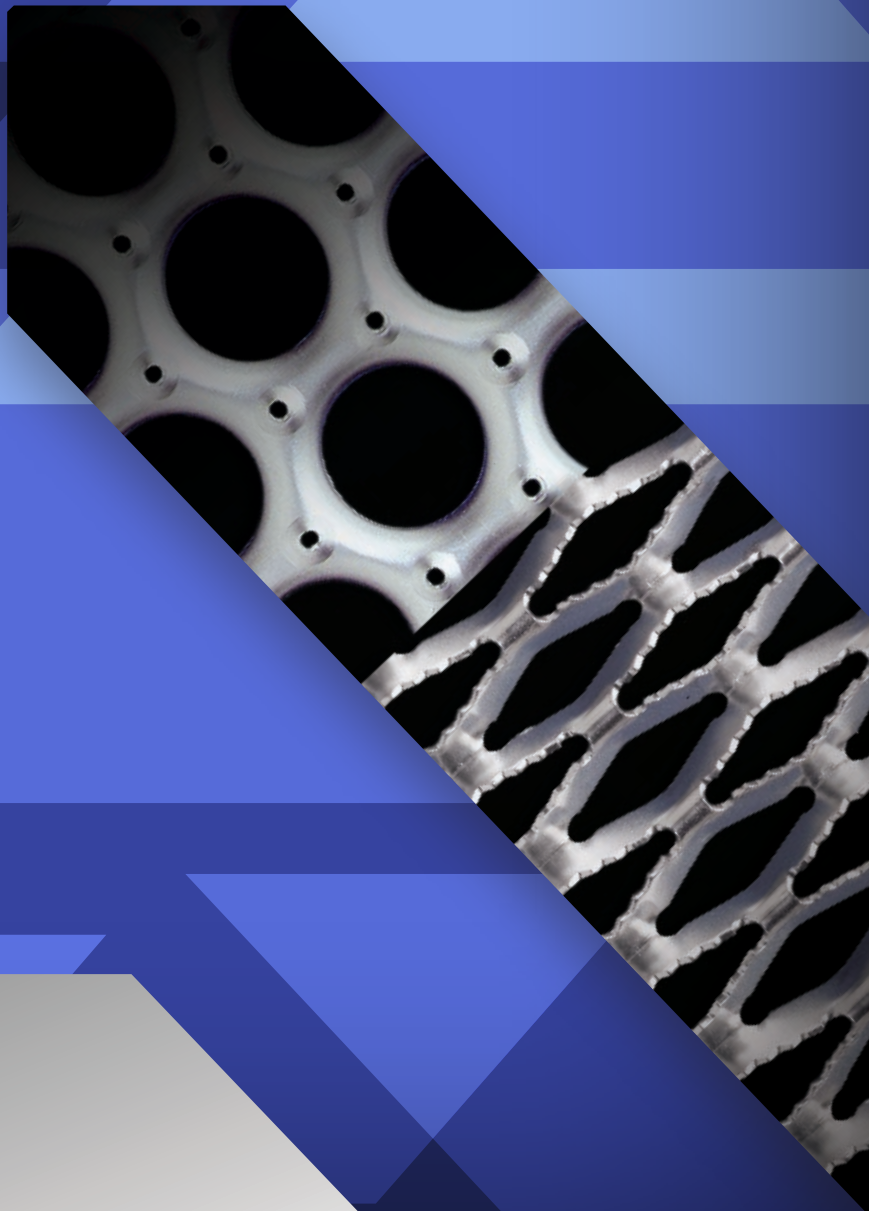
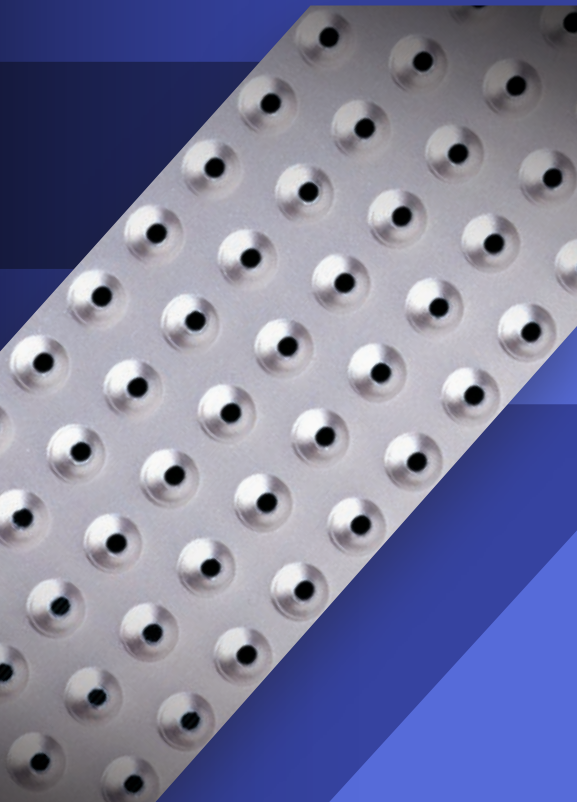


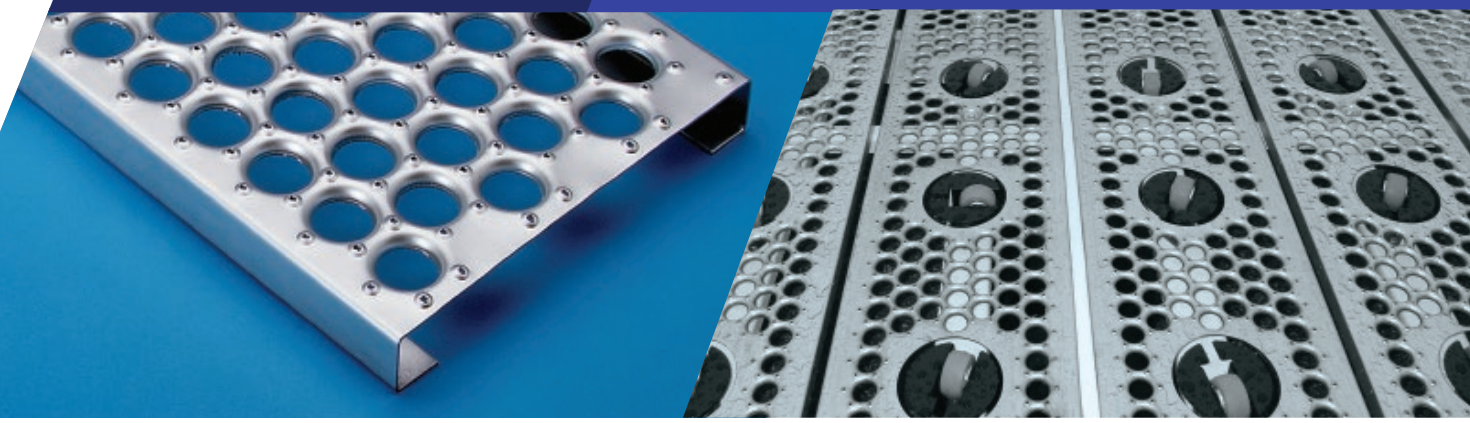
Manufacturer of Safety Grating, Perforated Products and Expanded Metal



METALEX[®]
POWERED BY UPG



Open Grip® Safety Grating



Metalex is proud to be recognized as North America's largest manufacturer of expanded metal, perforated and safety grating products. In Libertyville, Illinois, our plant spans a total of 185,000 square feet ideally situated among major cross-continental shipping routes. Our 125,000-square-ft. plant in San Luis Potosi, Mexico has extended our global reach and is in close proximity to our end users in Mexico.

To be the industry leader means maintaining a vigilant focus on our customers and how we can positively impact their success. Metalex never stops innovating and further demonstrates our commitment to excellence with ISO 9001:2015 certification.

Safety grating

Our Open Grip®, Deck Span®, Tread Grip® and Star Deck® products protect against slips and falls on walkways, stairs, platforms and other industrial applications where weather, chemical and other environmental hazards threaten safety. Advanced, value-added capabilities enable us to fully customize our products to fit your existing equipment.

Perforated products

The growing popularity of our perforated offerings contributes to an ever-expanding landscape of light and heavy gauge applications from filtration to noise control to architectural design. Explore your options with a variety of attractive patterns multiplied by the many metal, plastic and paper materials we can process.

Or, let us create a custom pattern for added appeal or product conformity.

Expanded metal

Metalex delivers the widest range of expanded metal solutions in the industry. The list of applications seems virtually endless: filtration, outdoor furniture, security barriers, automotive grilles, and loudspeaker grilles to name a few. This material offers extreme versatility, enabling you to choose from standard designs or contemplate infinite combinations of patterns and characteristics.

Metalex Milestones

1961 – Founded.

2005 – Acquires Arcor, Inc., adding perforated metal, spiral tubes and stampings to the product range.

2011 – Metalex acquires Morton Manufacturing Company (founded in 1903), the leading manufacturer of anti-slip industrial and railroad walking surfaces for more than a century.

2014 – Metalex and Morton merge under the Metalex name.

2016 – Metalex Expands global reach by opening a plant in San Luis Potosi Mexico

2019 – Metalex acquired by UPG Enterprises LLC, a strategic operator of metals and logistics companies across North America.

Open Grip® Grating

Open Grip® is the original round hole debossed grating. The self-cleaning pattern is produced by a cold-working process that creates raised, perforated buttons and 1-3/8" debossed holes that permit the flow of air, heat and light.

What makes it great

The unique Open Grip® pattern pairs with the structural integrity of cold-formed side channels.

- Provides excellent slip resistance in all directions
- Easy to handle and install
- Lightweight
- Comfortable walking surface

Applications

- Stair treads
- Platforms
- Mezzanines
- Walkways
- Channels

Open Grip® Channels

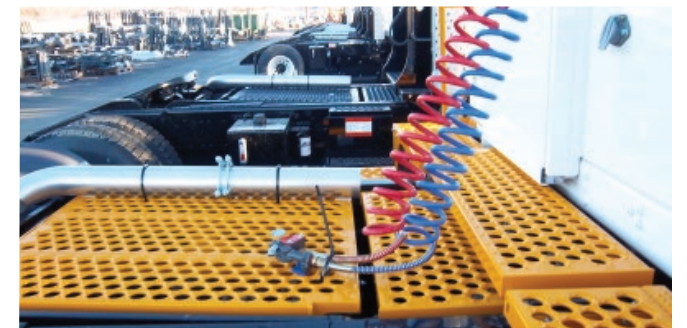
Standard sizes

- Pre-galvanized or HRP&O steel
- 13 and 11 gauge steel
- .125" 5052-H32 aluminum
- 120" or 144" long

Open Grip® walkways and stair treads also available.

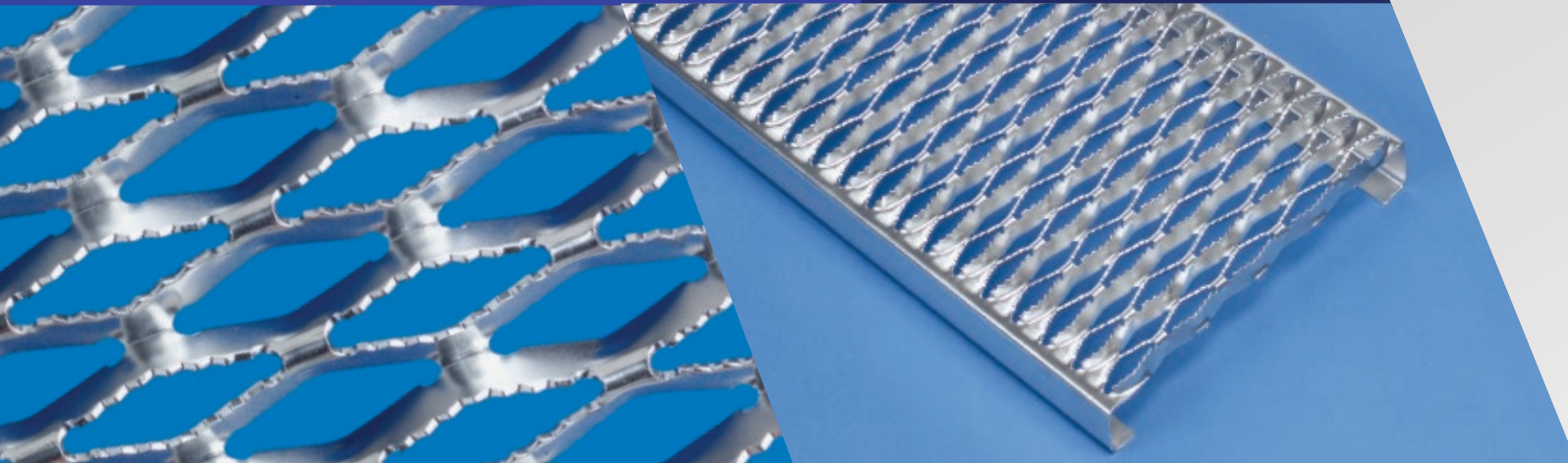
Custom Sizes Available

Width	Channel Height	13 ga. Steel Wt./Ln. Ft.	11 ga. Steel Wt./Ln. Ft.	Alum. Wt./Ln. Ft.
5"	1-1/2"	2.56	3.41	N.A.
	2"	2.87	3.82	1.36
7"	1-1/2"	3.25	4.33	N.A.
	2"	3.25	4.33	1.55
10"	1-1/2"	4.02	5.36	N.A.
	2"	4.02	5.36	1.91
12"	1-1/2"	4.40	5.87	N.A.
	2"	4.40	5.87	2.09
18"	1-1/2"	5.63	7.50	N.A.
	2"	5.63	7.50	2.67
24"	1-1/2"	N.A.	N.A.	N.A.
	2"	N.A.	9.45	N.A.
30"	1-1/2"	10.6	14.2	N.A.
	2"	10.6	14.2	N.A.
36"	1-1/2"	N.A.	15.9	N.A.
	2"	N.A.	15.9	N.A.



Metalex delivers the industry's most comprehensive manufacturing capabilities. Programmable dies enable us to start and stop Open Grip® patterns & features as desired. With CAD, laser cutting, punching, welding and forming operations, we can meet virtually any customer requirement.

Deck Span® Safety Grating



Deck Span® Grating

This aggressive metal safety grating provides excellent traction in wet, oily or other unforgiving environments.

What makes it great

The surface pattern is a diamond configuration created by the cross-hatching of formed and reticulated metal struts.

- Excellent slip resistance in all directions
- Outstanding load-carrying capabilities
- Lightweight
- Allows for passage of light and waste materials

Applications

- Open flooring
- Stair treads
- Catwalks
- Platforms
- Balconies
- Walkways

Deck Span® Channels

Standard sizes

- Pre-galvanized or HRP&O steel
- 14 and 12 gauge steel
- .080" and .100" 5052-H32 aluminum
- 16 gauge stainless steel 304-2B
- 121.5" or 144" long

Custom Sizes Available

Width	Channel Height	14 ga. Steel Wt./Ln. Ft.	12 ga. Steel Wt./Ln. Ft.	.080 Alum. Wt./Ln. Ft.	.100 Alum. Wt./Ln. Ft.	16 ga. Stainless Wt./Ln. Ft.
4-3/4" (2 Diamond)	1-1/2"	2.3	3.2	.8	1.1	—
	2"	2.6	3.6	.9	1.2	—
7" (3 Diamond)	1-1/2"	3.0	4.1	1.0	1.4	—
	2"	3.2	4.5	1.2	1.5	—
9-1/2" (4 Diamond)	1-1/2"	3.6	5.0	1.3	1.6	—
	2"	3.8	5.4	1.4	1.7	3.2
11-3/4" (5 Diamond)	1-1/2"	4.2	5.9	1.5	1.9	—
	2"	4.4	6.2	1.6	2.0	3.7

Deck Span® walkways and stair treads also available.



Tread Grip® Flooring, Channels and Ladder Rung



Tread Grip® Flooring, Channels and Ladder Rungs

Our dual-purpose, proprietary design performs equally well as a floor overlay or grating, combining slip resistance and strength.

What makes it great

The key feature that differentiates this product line is its system of closely spaced, raised perforated buttons.

- Superior slip resistance in all directions
- An average of 100 buttons grip the foot at every step
- Long service life
- Minimal pass-through prevents high heels, debris and tools from falling through

Applications

- Cover existing wood, cement or bar grating floor
- Catwalks
- Mezzanines
- Stair treads
- Ladder rungs
- Work platforms

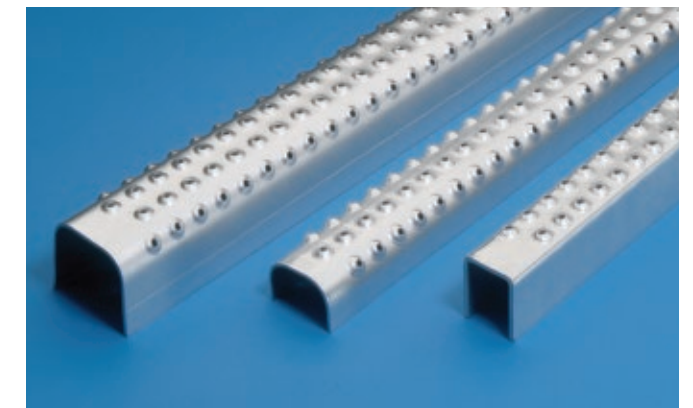
Tread Grip® Channels

- Pre-galvanized or HRP&O steel
- 13 and 11 gauge steel
- .125" 5052-H32 aluminum
- 120" or 144" long

Standard Size Sheets

- 36"x120"

Width	Channel Height	13 ga. Steel Wt./Ln. Ft.	11 ga. Steel Wt./Ln. Ft.	Alum. Wt./Ln. Ft.
7"	1-1/2"	3.63	4.82	N.A.
	2"	3.63	4.82	1.73
10"	1-1/2"	4.57	6.09	N.A.
	2"	4.57	6.09	2.17
12"	1-1/2"	5.13	6.85	N.A.
	2"	5.13	6.85	2.44



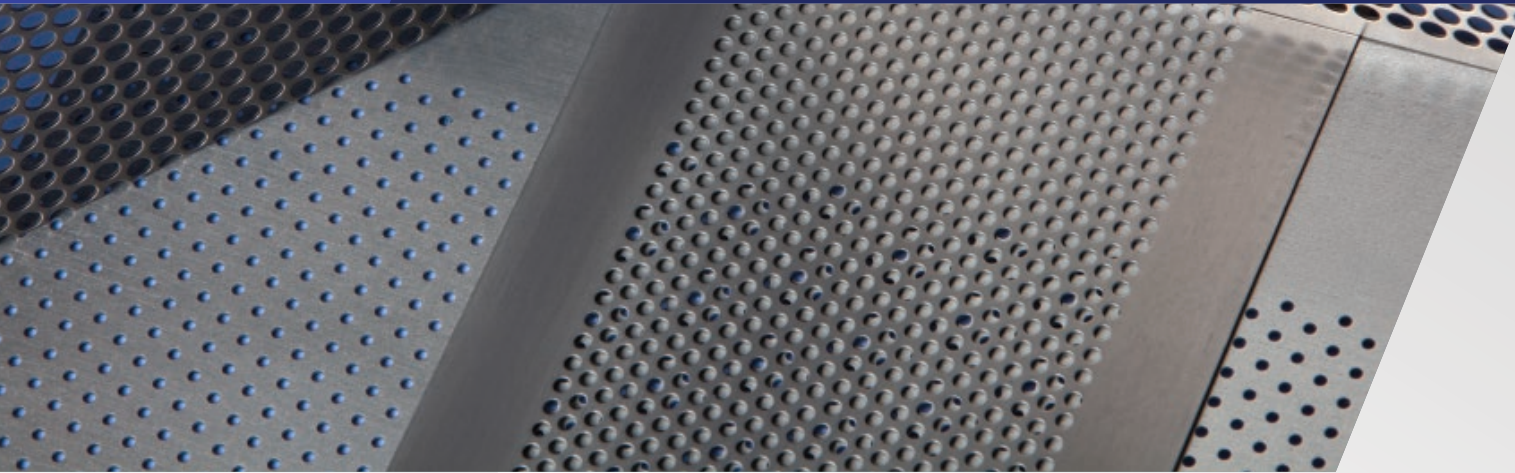
Tread Grip® Ladder Rungs

Standard ladder rungs

- Pre-galvanized or HRP&O steel
- 13 and 11 gauge steel
- .125" 5052-H32 aluminum
- 16 gauge stainless steel 304-2B
- Standard lengths: 48-3/4", 60"

Custom Sizes Available

Perforated Products



Perforated Products

Increasing demand for our perforated metal offerings attests to their unlimited versatility. Designers and architects alike spec them for their lasting beauty, practicality and purpose.

What makes it great

Beyond our standard patterns, our advanced capabilities enable you to partner with our sales and engineering team to turn your vision into the perfect custom solution for your application. Additional capabilities include:

- Tool gagging for finished end pattern work
- In-line leveling (for select recoil work)
- In-line slitting (prefer 3" wide or wider mult size)
- Panel perforating (4-side margins and non-perforated areas within the perforated areas)

Applications

- Filtration
- HVAC
- Noise abatement
- Lighting
- Building Products
- Automotive
- Agricultural equipment
- Speaker grilles
- Electronic enclosures
- Appliances
- Aerospace
- Architectural
- Store displays and fixtures

Processing capabilities

- Coil-to-coil
- Coil-to-sheet
- Sheet-to-sheet
- 19,500 lb. max coil handling

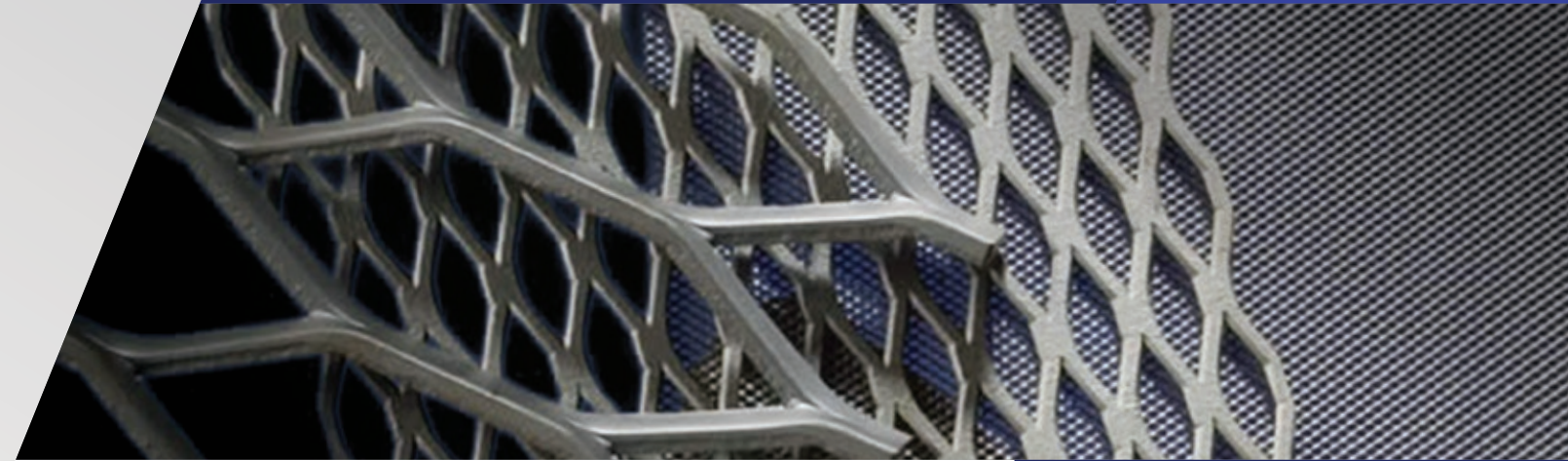
Material sizes

- 60" max width (actual width 62")
- 144" max length (up to 240" with special material handling considerations)
- .008" to .135" mild steel
- .008" to .135" stainless
- .020" to .188" (3/16") aluminum
- 1.000" to 6.000" tube diameter
- 2.000" to 160.00" tube length

Spiral tube fabrication

Our spiral lock seam tube design offers a popular, cost-effective alternative to straight lock-seamed or welded tubes. Choose from tin, stainless, galvanized, brass and aluminum.

Expanded Metal



Expanded Metal

Engineers, designers and builders overwhelmingly trust the industry leader, Metalex. We offer the most options, the widest selection, largest capacity and the best quality available.

What makes it great

Versatility. Choose from ferrous and non-ferrous metals, an extensive range of mesh sizes and virtually infinite pattern capabilities.

- Increased pattern size improves cost effectiveness
- Varied strand width affects appearance and weight

Applications

- Filtration
- Barrier mesh
- Ceiling panels
- Speaker grilles
- Patio furniture
- Shelving
- Guards
- Chimney caps
- Architecture
- Racks
- Platform/decking
- RF shielding
- Trailers

Material sizes

- .008" to 10 gauge thick

Value-added secondary operations

Metalex reduces your in-house costs by delivering your orders ready for use.

- Laser Cutting
- Shearing
- Forming
- Anodizing
- Plasma cutting
- Electro polishing
- Post-Galvanizing
- Welding





700 Liberty Drive
Libertyville, IL 60048

877-667-8634
847-362-5400
Fax 847-362-5434

sales@metlx.com
www.metlx.com



ISO 9001:2015 Certified

Made in North America