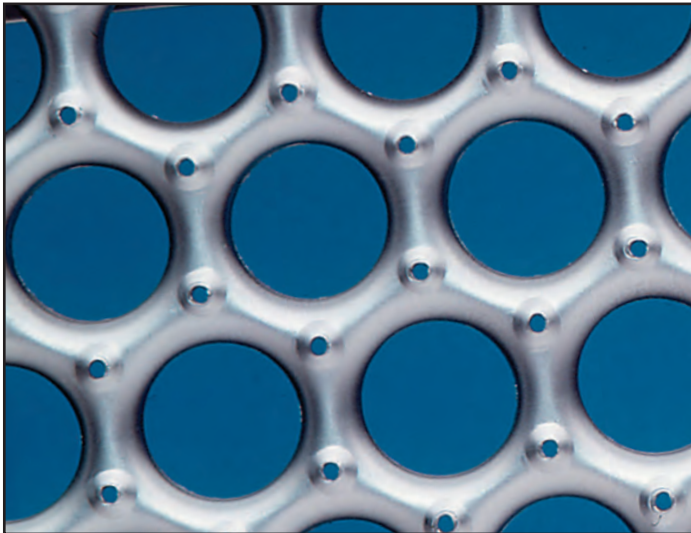
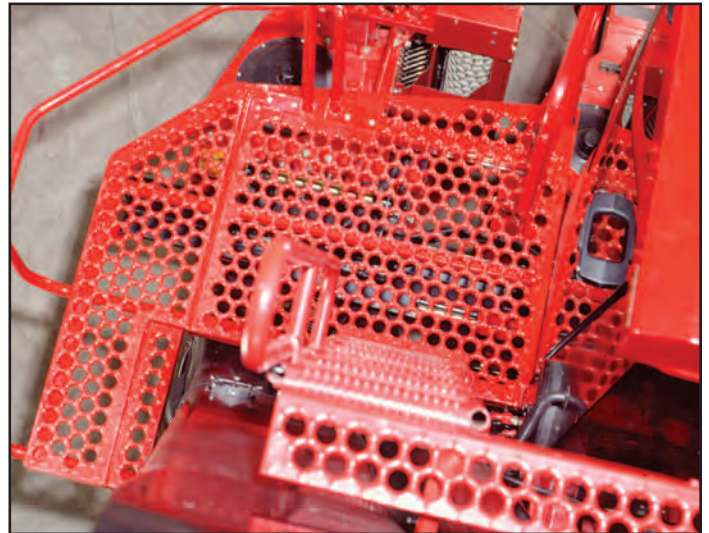


# Morton

## MANUFACTURING COMPANY



# SAFETY GRATING & FLOOR TREAD



## DESCRIPTION & APPLICATIONS

Open-Grip® is a one-piece sheet metal grating with a slip-resistant walking surface of raised perforated buttons surrounding large debossed holes. It is widely used for catwalks, mezzanines, stair treads and work platforms – wherever safe, comfortable footing on open flooring is needed.

## Features & Benefits

The unique Open-Grip® pattern combined with the structural integrity of the cold-formed side channels provide:

- **Excellent slip resistance in all directions.** The “gripping” buttons take hold whichever way the foot moves and approximately 25 buttons “grip” each foot at every step. Exceeds the slip resistance requirements of Federal Specification RR-G-1602D (1996).

- **High strength-to-weight performance.** Reduces support requirements and provides minimum deflection under average loads.
- **Maintenance-free open design.** Open area of at least 35% allows easy passage of light, heat, dirt and small debris self-cleaning. Ideal for exterior applications where ice, snow, mud or oil are present.
- **Easy installation.** Lightweight planks can be easily handled by one man. Sections may be bolted, clamped or tack welded into place. Easy to field cut and fit. Bolt seats are available for use in fastening through the surface.
- **Versatile.** Wide variety of standard sizes and weights available to meet most application requirements. Custom design is available to meet unusual requirements.

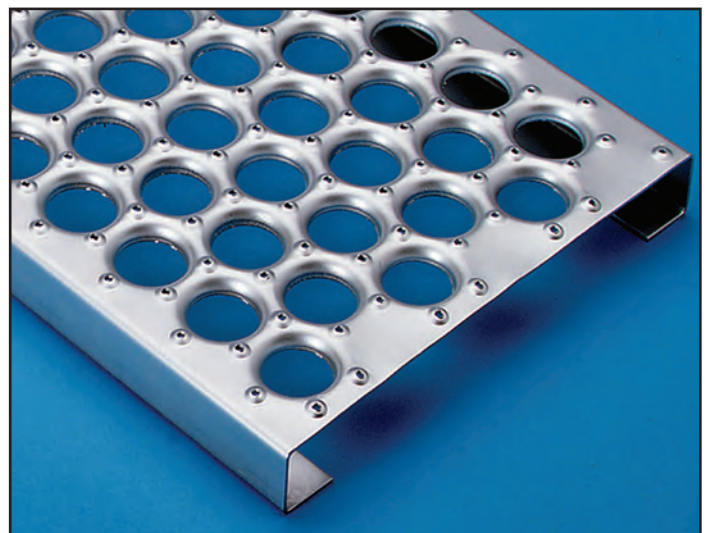
## Open-Grip® Channels

### STANDARD SIZES

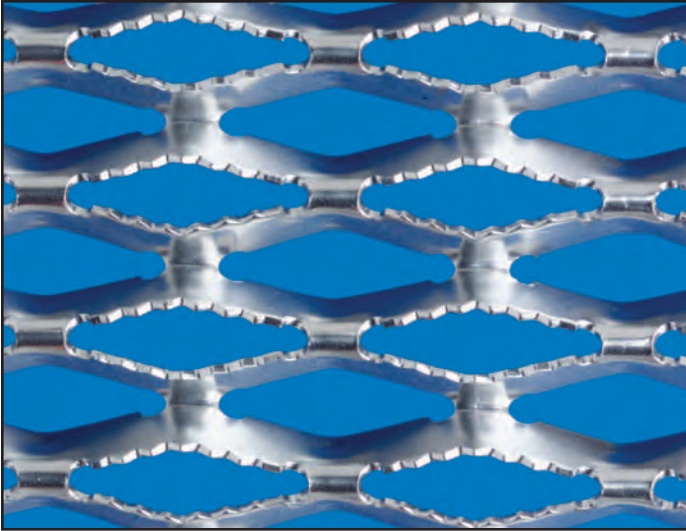
- Pre-Galvanized or HRP&O Steel
- 13 and 11 Gauge Steel
- .125” 5052-H32 Aluminum
- 120” or 144” Long

Width	Channel Height	13 ga. Steel Wt./Ln. Ft.	11 ga. Steel Wt./Ln. Ft.	Alum. Wt./Ln. Ft.
5"	1-1/2"	2.56	3.41	N.A.
	2"	2.87	3.82	1.36
7"	1-1/2"	3.25	4.33	N.A.
	2"	3.25	4.33	1.55
10"	1-1/2"	4.02	5.36	N.A.
	2"	4.02	5.36	1.91
12"	1-1/2"	4.40	5.87	N.A.
	2"	4.40	5.87	2.09
18"	1-1/2"	5.63	7.50	N.A.
	2"	5.63	7.50	2.67
24"	1-1/2"	N.A.	N.A.	N.A.
	2"	N.A.	9.45	N.A.

## Open-Grip® Grating



## Deck Span® Grating



## Deck Span® Grating

Deck Span® grating features a unique, one-piece construction that is self-framing, lightweight and offers outstanding load-carrying capabilities. Deck Span® grating products provide in plant safety in the form of open flooring, catwalks, platforms, balconies, stair treads and walkways. The surface pattern is a diamond configuration created by the cross-hatching of formed and reticulated metal struts, which allows for the passage of light and waste materials. The diamond design offers excellent slip resistance in all directions. Deck Span® is designed with a relief hole at the point of the diamond.

## Deck Span® Channels

### STANDARD SIZES

- Pre-Galvanized or HRP&O Steel
- 14 and 12 Gauge Steel
- .080" and .100" 5052-H32 Aluminum
- 16 Gauge Stainless Steel 304-2B
- 121.5" or 144" long

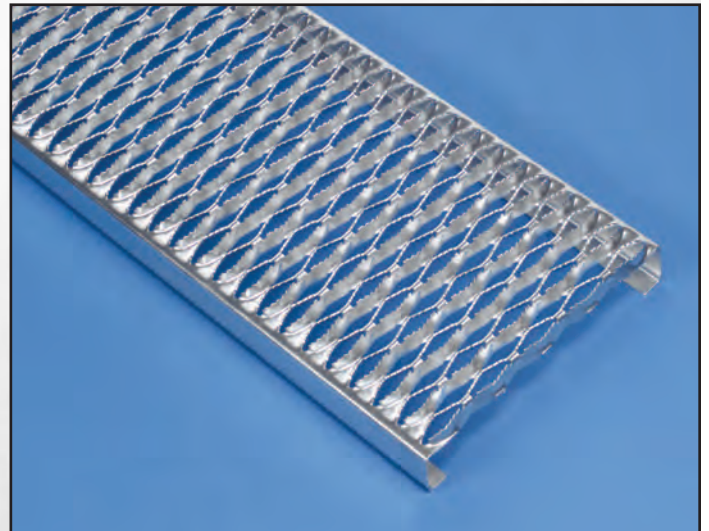
Width	Channel Height	14 ga. Steel Wt./Ln. Ft.	12 ga. Steel Wt./Ln. Ft.	.080 Alum. Wt./Ln. Ft.	.100 Alum. Wt./Ln. Ft.	16 ga. Stainless Wt./Ln. Ft.
4-3/4" (2 Diamond)	1-1/2"	2.3	3.2	.8	1.1	—
	2"	2.6	3.6	.9	1.2	—
7" (3 Diamond)	1-1/2"	3.0	4.1	1.0	1.4	—
	2"	3.2	4.5	1.2	1.5	—
9-1/2" (4 Diamond)	1-1/2"	3.6	5.0	1.3	1.6	—
	2"	3.8	5.4	1.4	1.7	3.2
11-3/4" (5 Diamond)	1-1/2"	4.2	5.9	1.5	1.9	—
	2"	4.4	6.2	1.6	2.0	3.7
18-3/4" (8 Diamond)	1-1/2"	6.1	8.5	2.1	2.69	—
	2"	6.3	8.9	2.25	2.8	—
24" (10 Diamond)	2"	7.4	10.1	—	—	—
	3"	7.9	10.8	—	—	—



## Design Advantages of Deck Span® Safety Grating

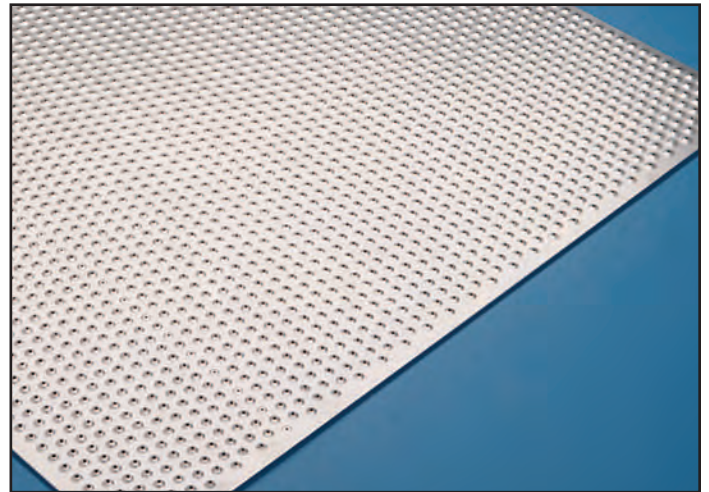
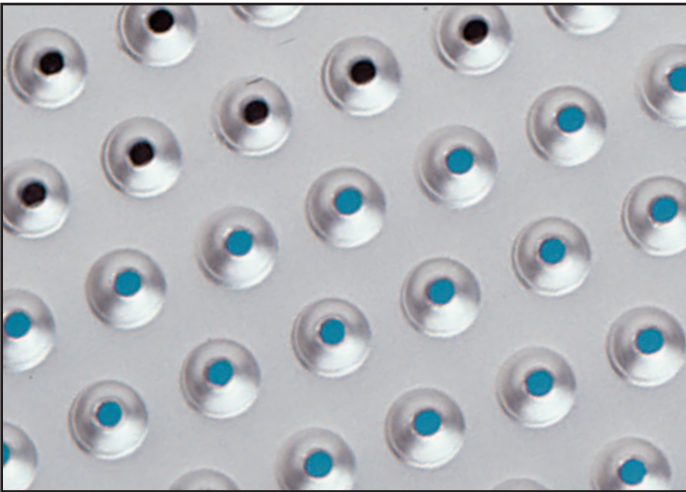
- Exceeds Federal Specifications for slip resistance
- Provides slip resistance in all directions
- Large open area
- Self cleaning, minimum maintenance
- One-Piece Construction
- Self Framing
- Lightweight
- Resilient walking surface
- Easy to handle and install

## Deck Span® Grating





## Tread-Grip® Flooring, Channels & Ladder Rungs



### DESCRIPTION & APPLICATIONS

Tread-Grip® is a metal flooring with an important difference – a surface of closely-spaced, raised perforated buttons that gives it excellent slip-resistance qualities. Tread-Grip® in flat sheet form is generally used as a floor overlay-over existing wood, cement or bar grating floors but it is also available in channel form for catwalks, mezzanines, stair treads, ladder rungs and work platforms.

### Features & Benefits

In it's dual role as sheet metal floor covering and grating, Tread-Grip® combines slip resistance and strength to provide:

- **Superior slip resistance.** The foot contacts the gripping edges of about 100 buttons at every step.
- **Low open area.** Debris and tools will not fall through. No holes to snag high heels.

### Tread-Grip® Sheets (STANDARD SIZE 36" x 120")

- **Long effective life.** Unique perforated button design provides years of slip-resistant service.
- **Versatile.** Standard or custom sized Sheets, Channels, Steps and Ladder Rungs. Special fabrications for OEM's. Available in Galvanized or HRP&O or Aluminum.
- **Custom sizes.** Are available upon request.

Material		Lbs./Sq. Ft.
16 ga.	Pre-Galv. or HRP&O	2.4
13 ga.	Pre-Galv. or HRP&O	3.6
11 ga.	Pre-Galv. or HRP&O	4.8
.125"	Aluminum	1.7

### Tread-Grip® Channels STANDARD SIZES

- Pre-Galvanized or HRP&O Steel
- 13 and 11 Gauge Steel
- .125" 5052-H32 Aluminum
- 120" or 144" Long

Width	Channel Height	13 ga. Steel Wt./Ln. Ft.	11 ga. Steel Wt./Ln. Ft.	Alum. Wt./Ln. Ft.
7"	1-1/2"	3.63	4.82	N.A.
	2"	3.63	4.82	1.73
10"	1-1/2"	4.57	6.09	N.A.
	2"	4.57	6.09	2.17
12"	1-1/2"	5.13	6.85	N.A.
	2"	5.13	6.85	2.44



### Tread-Grip® Ladder Rungs STANDARD LADDER RUNGS

- Pre-Galvanized or HRP&O Steel
- 13 and 11 Gauge Steel
- .125" 5052-H32 Aluminum
- 16 Gauge Stainless Steel 304-2B
- Standard lengths: 16", 18", 48-3/4", 60"

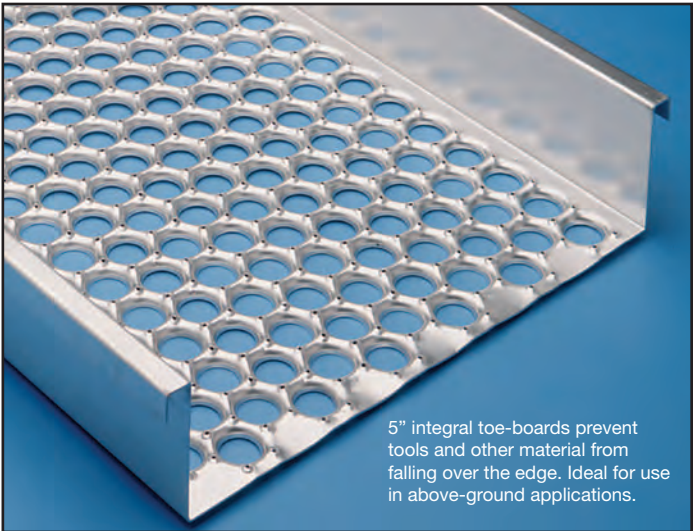


STANDARD SIZES

- Pre-Galvanized or HRP&O Steel
- 13 and 11 Gauge Steel
- 120” or 144” Long
- Integral toe-board meets OSHA requirements for elevated catwalks (no need to weld toe plates) saves on labor.
- Ideal for use as elevated catwalks for quarries, grain handling equipment, conveyors, etc.
- Meets Federal Specification RR-G-1602D (1996) for slip resistance.

Width	Toe Plate Height	13 ga. Steel Wt./Ln. Ft.	11 ga. Steel Wt./Ln. Ft.
24”	5”	9.25	12.33
30”	5”	10.63	14.17
36”	5”	N.A.	15.94

Splice plates for on or between supports available.



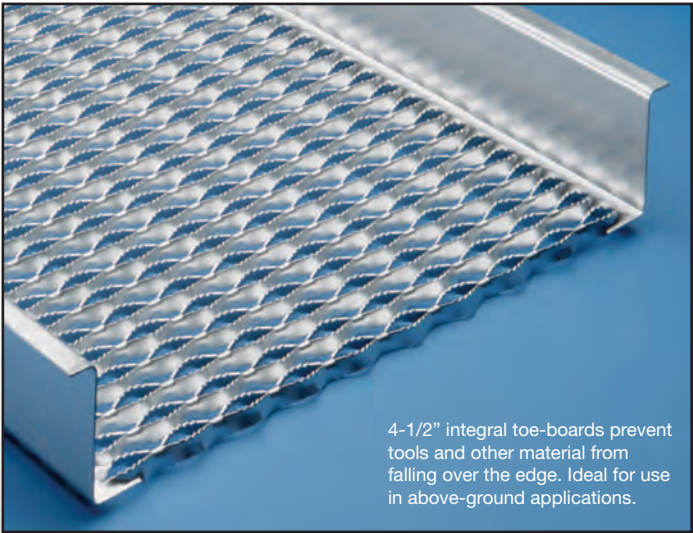
5” integral toe-boards prevent tools and other material from falling over the edge. Ideal for use in above-ground applications.

Deck Span® Walkways

STANDARD SIZES

- Pre-Galvanized or HRP&O Steel
- 12 and 14 Gauge Steel
- 120” or 144” Long
- 24” Wide 10 Diamond x 4-1/2” high toe-board
- Integral toe-board meets OSHA requirements for elevated catwalks (no need to weld toe plates) saves on labor.
- Ideal for use as elevated catwalks for quarries, grain handling equipment, conveyors, etc.
- Meets Federal Specification RR-G-1602D (1996) for slip resistance.

Width	Toe Plate Height	14 ga. Steel Wt./Ln. Ft.	12 ga. Steel Wt./Ln. Ft.
24”	4-1/2”	8.8	11.9



4-1/2” integral toe-boards prevent tools and other material from falling over the edge. Ideal for use in above-ground applications.



## Open-Grip® Stair Treads

### STANDARD SIZES

- Pre-Galvanized or HRP&O Steel
- 13 and 11 Gauge Steel
- .125" 5052-H32 Aluminum
- Margins All Sides
- Integral Ends Caps with Mounting Holes and Slots
- Custom Sizes Available

Length	24"	30"	36"	48"
Width	10" & 12"	10" & 12"	10" & 12"	10" & 12"
Height	2"	2"	2"	2"

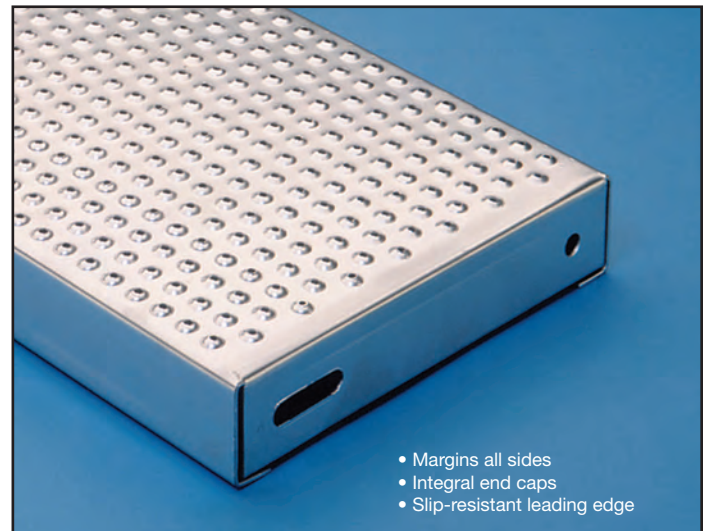


## Tread-Grip® Stair Treads

### STANDARD SIZES

- Pre-Galvanized or HRP&O Steel
- 13 and 11 Gauge Steel
- .125" 5052-H32 Aluminum
- Margins All Sides
- Integral Ends Caps with Mounting Holes and Slots
- Custom Sizes Available

Length	24"	30"	36"	48"
Width	10"	10"	10"	10"
Height	2"	2"	2"	2"



## Deck Span® Stair Treads

### STANDARD SIZES

- Pre-Galvanized or HRP&O Steel
- 14 and 12 Gauge Steel
- .100" 5052-H32 Aluminum
- Common Sizes: 24", 30", 36" and 48" Lengths

Length	24"	30"	36"	48"
Width	9-1/2" & 11-3/4"	9-1/2" & 11-3/4"	9-1/2" & 11-3/4"	9-1/2" & 11-3/4"
Height	1-1/2" & 2"	1-1/2" & 2"	1-1/2" & 2"	1-1/2" & 2"



## Plank Accessories/ Installation

Utilizing the methods below Open-Grip® and Deck Span® Safety Grating are easily installed.

### Open-Grip® Fastener

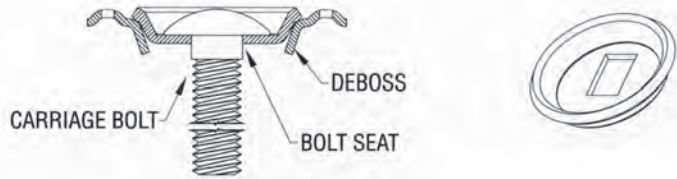
#### 1/2" Bolt Seat

Morton Part Number: 701-214

#### 3/8" Bolt Seat

Morton Part Number: 701-215

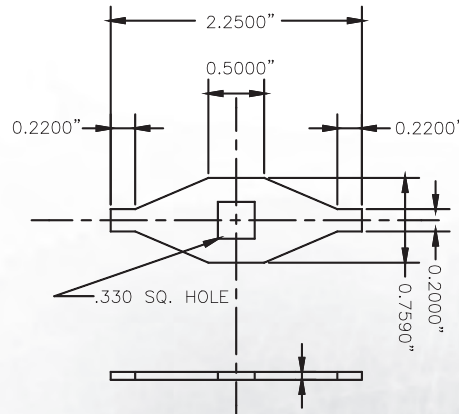
Does not include bolts, nuts or washers.



### Deck Span® Fastener

Diamond Anchor Catalog DS-P-DW is shaped to fit in diamond opening. Punched to receive 5/16" carriage head bolt with square shank.

Does not include bolts, nuts or washers.



**Morton**  
MANUFACTURING COMPANY

**Morton Manufacturing Company**  
700 Liberty Drive  
Libertyville, Illinois 60048-2376

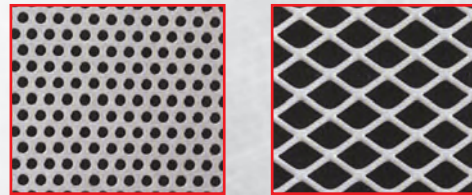
**MADE IN USA**

SINCE 1903

sales@mortonmfg.com  
**Toll Free** 877-667-8634  
**Phone** 847-362-5400  
**Fax** 847-362-5434

[www.mortonmfg.com](http://www.mortonmfg.com)

### Expanded Metal & Perforated Products



For inquiries on expanded metal and/or perforated products, contact Metalex, a sister company of Morton and part of the Jason, Inc. family of companies.

1530 Artaius Parkway  
Libertyville, IL 60048-0399  
**Toll Free: 800-323-0792**  
**Fax: 847-362-7939**  
[www.metlxx.com](http://www.metlxx.com)

**METALEX**

**ISO 9001 Certified**  
Open-Grip®, Tread-Grip®, Deck Span® Registered  
Safety Grating and Metal Fabrication

Catalog: MMC // Jan 2013