



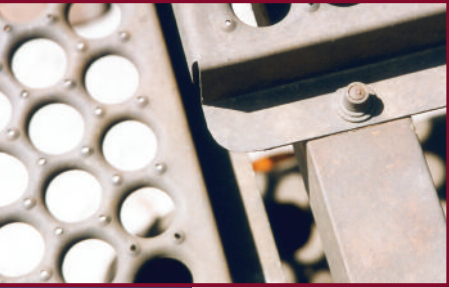
**Morton**

# **SPECIALISTS TO THE RAILROAD INDUSTRY**

## **FREIGHT CARS**

- **RUNNING BOARDS**
- **BRAKE STEPS**
- **END PLATFORMS**
- **INTERMODAL PLATFORMS**

# A LOOK AT MORTON

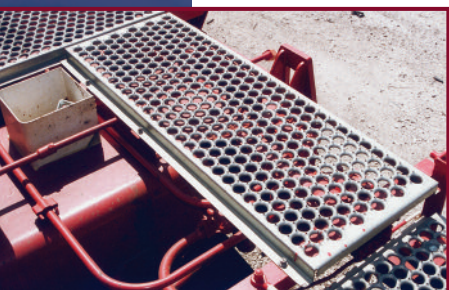


Since 1903, four generations of the family-owned Morton Manufacturing Company have been providing safe walking surfaces to the railroad freight car industry. Unlike other companies, who claim to be the “original” safety grating manufacturer, Morton’s first United States Patent for metal railroad safety grating was awarded in 1917...and we have been continuously improving the product ever since.

Open-Grip® running boards, intermodal platforms, brake steps, and end platforms are made from 13 gauge G-90 pre-galvanized prime steel. Morton Manufacturing is proud to have a quality system that is certified to the ISO 9001: 2008 standard. All Morton railroad products are AAR approved.

One of the unique design advantages of Open-Grip® is the ability to interrupt the pattern. Interrupting the pattern allows us to offer integral “wiped” ends on our boards. This strong, radiused end is an important safety feature that provides a safe transition between boards when they are laid end to end. It also eliminates the mechanically fastened end supports that some other companies use.

Morton Manufacturing is the industry leader in specialized, value-added applications which we can design to your specifications. We are small enough to react to your specific requirements and large enough to effectively and economically service your company’s needs.





# OPEN-GRIP® RUNNING BOARDS

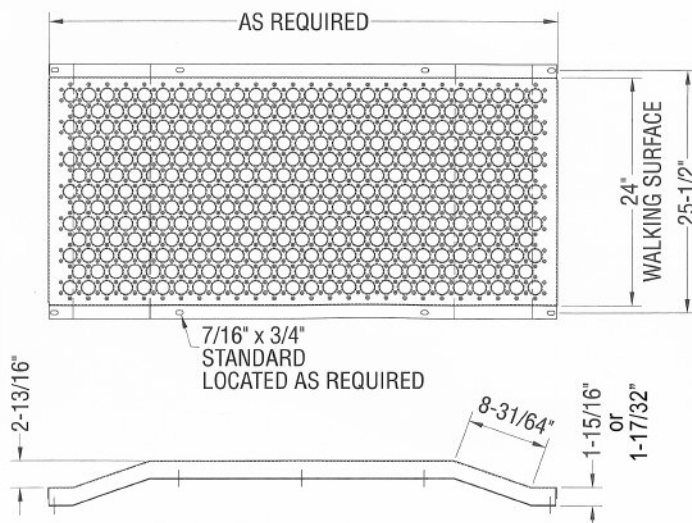
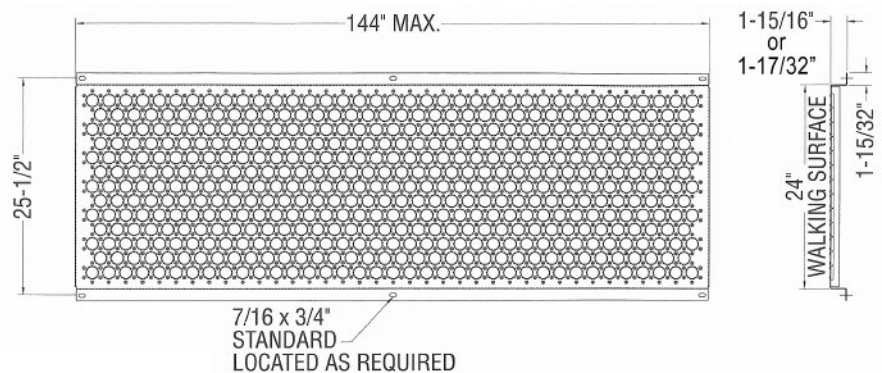


Morton's Open-Grip® running boards are designed with large, round debossed holes and raised, perforated buttons, integral wiped ends and they have margins all the way around. This self-cleaning design allows ice, snow, mud, and other debris to fall through, keeping the walking surface clear and safe. The cold-formed pierced buttons provide slip resistance in all directions and retain their gripping power with wear.

Running boards are typically mounted through slots in the offset flange, but they also can be mounted using a special slotted bolt seat through the debossing. Grab handles are safely and easily installed using special top and bottom washers through the debossed holes.



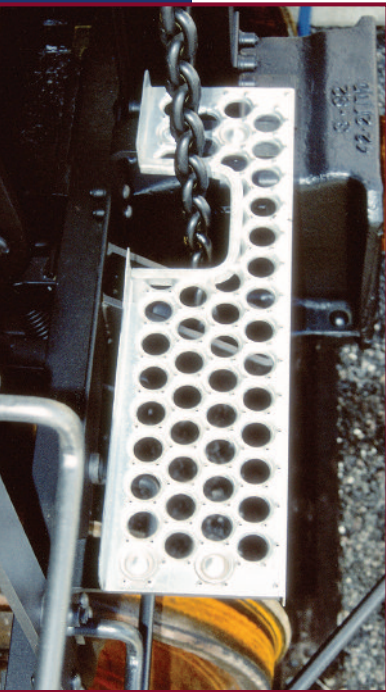
**Standard Running Boards**  
are available in two heights:  
 $1\frac{15}{16}"$  and  $1\frac{17}{32}"$



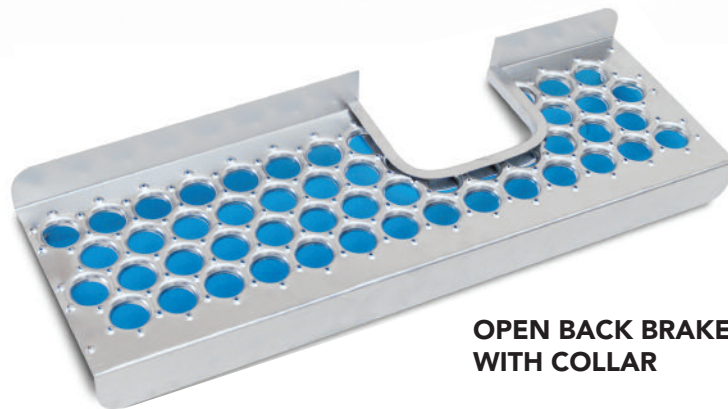
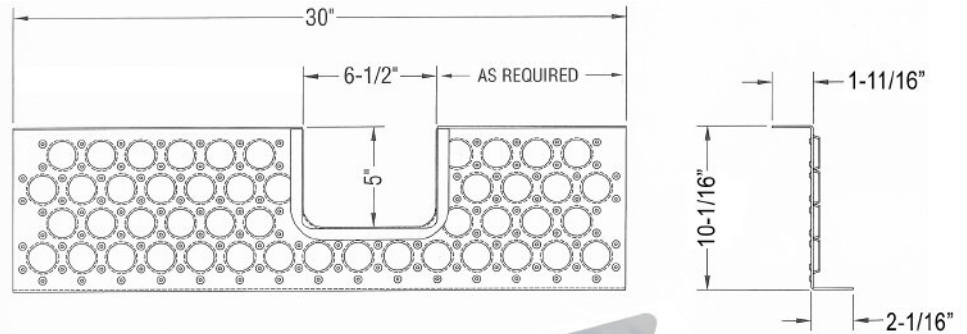
**Kinked Latitudinal Boards**  
are available in two heights:  
 $1\frac{15}{16}"$  and  $1\frac{17}{32}"$



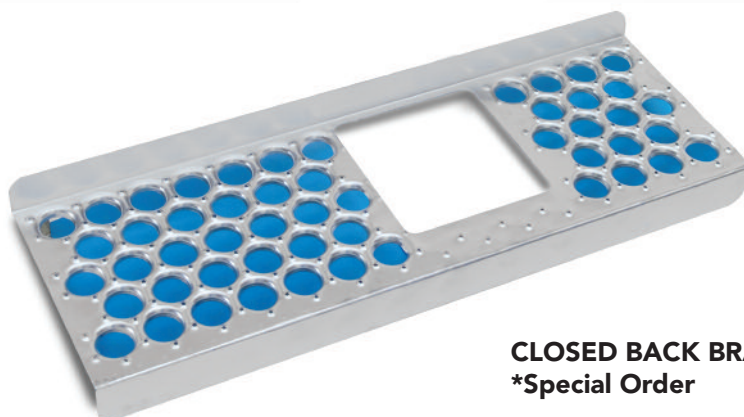
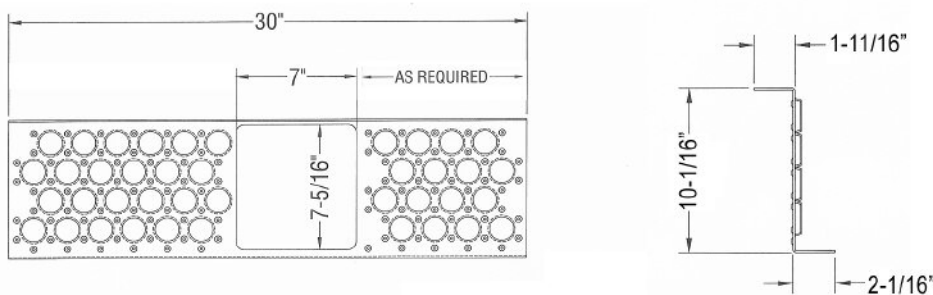
# OPEN-GRIP® BRAKE STEPS



Morton's line of brake steps and end platforms feature the same lightweight, self-cleaning, slip-resistant Open-Grip® pattern that our running boards use. Both brake steps and end platforms are easily fastened to the car using bolt seat washers through the Open-Grip® debossings.



**OPEN BACK BRAKE STEP  
WITH COLLAR**

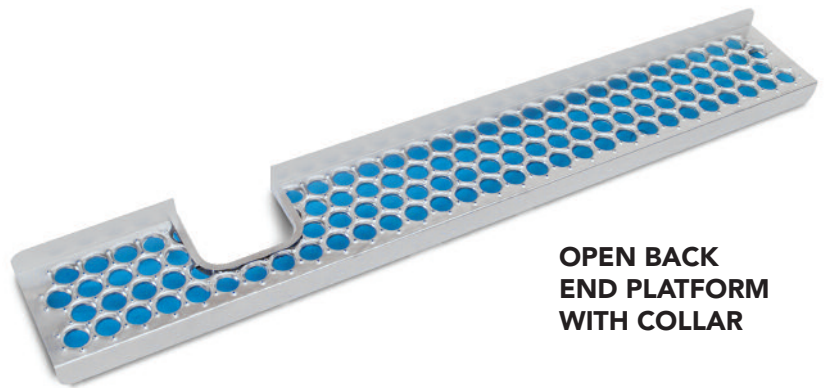
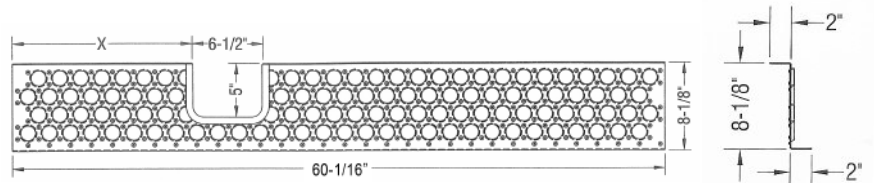
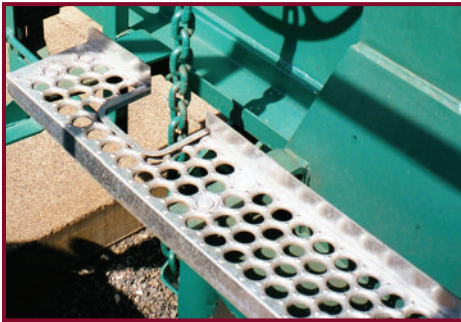


**CLOSED BACK BRAKE STEP**  
\*Special Order

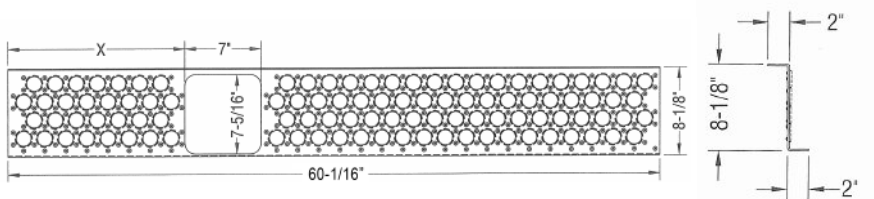


# OPEN-GRIP® END PLATFORMS

Standard end platforms are 8 1/8" wide and 60 1/16" long. The open back end platform allows installation without removing the brake chain. The closed-back style has a cutout in the walking surface for the brake chain to go through and is available as a special order. In the back of this brochure is a chart drawing of the most common brake steps and end platforms.



**OPEN BACK  
END PLATFORM  
WITH COLLAR**

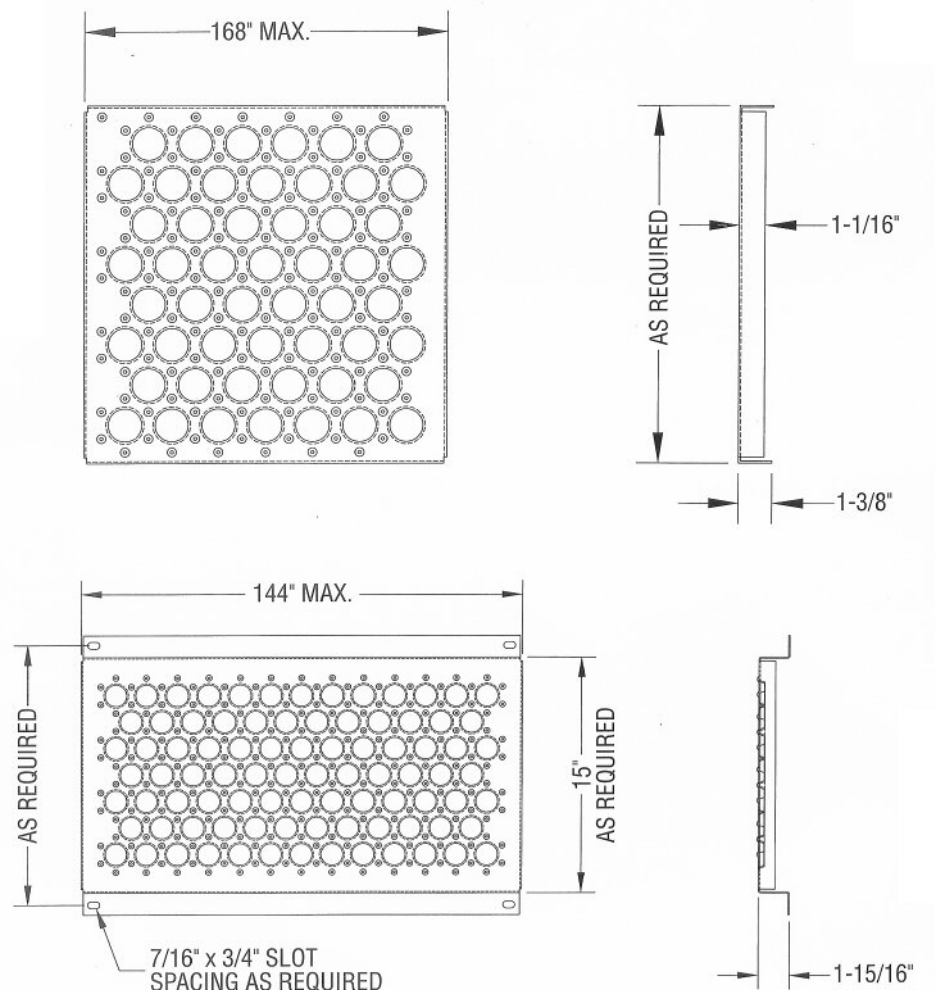
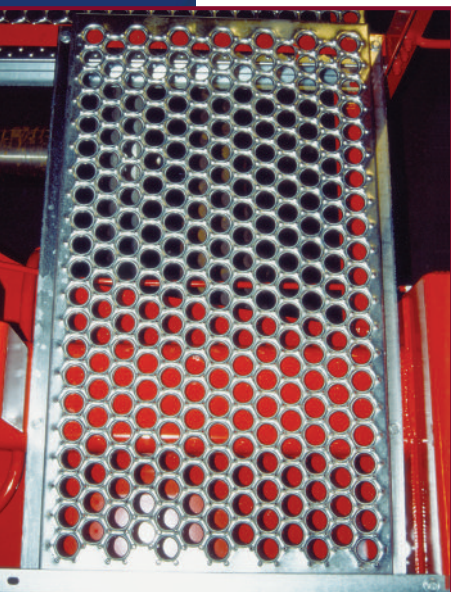
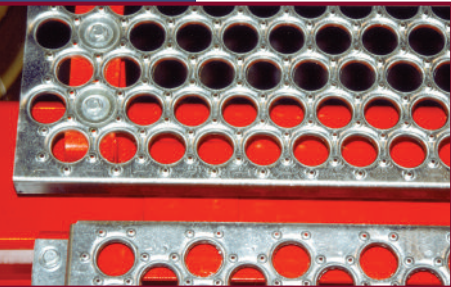
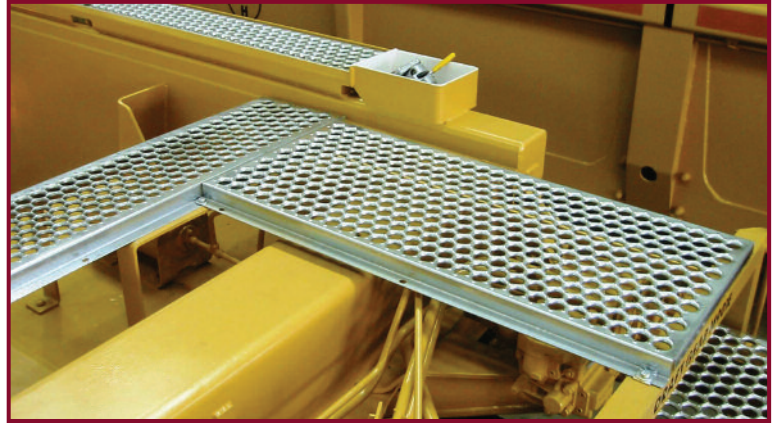


**CLOSED BACK  
END PLATFORM  
\*Special Order**

# OPEN-GRIP® PLATFORMS



Morton platforms are widely used in double stack and coil car applications. The design advantages of our product allow total flexibility in terms of width, length, pattern spacing, and cutout placement. No matter what space you need to fill with a safe walking surface, Morton can design a platform to fit.









*Morton*

**Morton Manufacturing Company**  
700 Liberty Drive • Libertyville, IL 60048-2376

Made in the USA since 1903

Toll Free: 877-667-8634 • Phone: 847-362-5400 • Fax: 847-362-5434  
sales@mortonmfg.com • www.mortonmfg.com